

Houndstooth Taskworx® Tile

Style Number	5T289	
Collection	Suited	
Product Type	Carpet Tile	
Construction	Standard	Data + Performance
Type of Manufacture	ISO 2424	tufted 1/10" 39.4 per 10cm
Aspect	ISO 2424	Multi-Level Pattern Loop
Dye Method	EN 994	100% Solution Dyed
Dimensions	EN 994	50 cm x 100 cm 10 tiles (5 m²) per box
Primary Backing	ISO 2424	Pet Non-Woven
Secondary Backing	ISO 2424	Taskworx® Tile Polymer Modified Bitumen
Pile Fibre Composition	ISO 2424	Eco Solution Q100™ Polyamide 6 Contains 100% Recycled Content
Total Thickness	ISO 1765	7.9 mm
Effective Pile Thickness	ISO 1766	2.2 mm
Total Mass	ISO 8543	4675 g/m²
Nominal Total Pile Mass	ISO 2424	949 g/m²
Effective Pile Mass	ISO 8543	306 g/m²
Pile Density	ISO 8543	0.136 g/cm³
Total Recycled Content		66% (pre-consumer 66% post-consumer 0%)

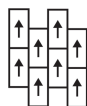


Performance

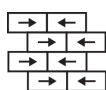
Number of Tufts	ISO 1763	142,000/m² 36.1 per 10cm
Protective Treatments		SSP® Shaw Soil Protection
Electrostatic Propensity	ISO 6356	≤ 2.0 kv (Stroll Test)
Use Classification	EN 1307	33 Commercial Heavy
Luxury Class	EN 1307	LC1
Dimensional Stability	EN 986	≤ 0.2%
Impact Sound Insulation	ISO 10140	26db*
Sound Absorption Classification	ISO 354/11654	0.20 αW Class E*
Thermal Resistance m² K/W	ISO 8302	0.090 M² K/W Tog 0.90*
Dry Slip Resistance	ISO 13893	Pass
Colour Fastness To Light	ISO 105-B02	>6
Flammability	EN 13501-1	Bfl-S1 (Adhered Testing)
Castor Chair	EN 985	≥2.4 Continuous Use

15 Year Commercial Limited Warranty subject to installation in full accordance with manufacturer's instructions and a regular effective cleaning and maintenance programme.

Recommended Installation Method



Ashlar



Brick



Monolithic



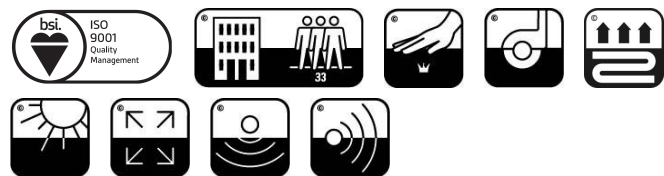
Basketweave



Half Basketweave



Boxed In



26dB 0.20 αw

Corporate Headquarters +1 800 257 7429 | +1 706 532 7984 | Atlanta +1 404 853 7429 | Bengaluru +91 80 6773 0202 | Beijing +86 10 6568 588 | Chicago +1 312 467 1331 | Dubai +971 4 584 6956 | Hong Kong +852 2623 0371 | Latin America (Miami) +1 305 827 5912 | London +44 207 961 4120 | Los Angeles +1 800 233 1614 | Melbourne +61 3 9939 8543 | Mexico City +55 5010 7600 | Mumbai +91 22 6284 5050 | Nantong +86 400 800 7429 | New York +1 212 953 7429 | Paris +33 (0) 1 81 22 44 39 | San Francisco +1 415 955 1920 | Santiago +562 2431 5000 x550 | São Paulo +55 11 3071 1702 | Shanghai +86 21 3338 4000 | Singapore +65 6733 1811 | Sydney +1 800 556 302

Coordinating Products

Carpet Tile: **Beam Comfortworx® Tile, Braid Comfortworx® Tile, Textile Comfortworx® Tile, Check Comfortworx® Tile, Jacquard Comfortworx® Tile, Houndstooth Comfortworx® Tile, Check Taskworx® Tile, Textile Taskworx® Tile, Jacquard Taskworx® Tile, Beam Taskworx® Tile, Braid Taskworx® Tile**

Product Transparency

Shaw Contract is dedicated to providing clients with a building chemistry that's safe and dependable. Working together, we will help you meet your goals as they pertain to material health. TaskWorx® products are Cradle to Cradle Certified® Bronze and assessed for impacts on human health and the environment. This product can be recycled. When it's time to replace, we can collect through our re-[TURN] scheme in EMEA.

Material Health & Environmental Certifications

Certifications below apply exclusively to the carpet tile rug itself and not the LokWorx Tabs adhesive

Declaration of Performance	EU.DOP/0493/CPR/0621/0422/BT
Cradle to Cradle Certified®	Bronze Level (Version 3.1)
Environmental Product Declaration (EPD)	3rd Party Certified in Accordance with ISO14044, ISO14025 & EN15804
Embodied Carbon (Cradle to Gate)	4.37 kg CO₂/m²
Life-Cycle Carbon Emissions	Carbon Neutral
Building Research Establishment (BRE)	A+ Health/A+ Retail 0.34/0.453 Ecopoints
Environmental Guarantee*	Take Back Policy Offered For All Taskworx Products
ISO 9001	Certified
Country of Origin**	United Kingdom
BREEAM Contribution Credit	Certificate of Approval Schools/Offices/Health/Industrial Shed Retail

WELL V2 Contribution Credit

X08 Hazardous Material Reduction Part 1: Limit Hazardous Materials Optimization	C2C Bronze Level (Version 3.1)
X10 Volatile Compound Reduction Part 1 (A): Manage Volatile Organic Compounds (VOCs) Optimization	C2C Bronze Level (Version 3.1)
X11 Long Term Emissions Control Part 2: Flooring Optimization	M1> Emissions Class For Building Material
X13 Enhanced Material Precaution Part 1: Select Optimized Materials Optimization	C2C Bronze Level (Version 3.1)
X14 Material Transparency Part 1: Promote Ingredient Disclosure Optimization	C2C Bronze Level (Version 3.1)

Leed v4 Contribution Credits

MR Credit: Building Product Disclosure and Optimization Environmental Product Declarations - Option 1: Environmental Product Declaration (EPD)	3rd Party Certified in Accordance with ISO14044, ISO14025 & EN15804
MR Credit: Building Product Disclosure and Optimization Material Ingredients - Option 1: Material Ingredient Reporting	C2C Bronze Level (Version 3.1)
MR Credit: Building Product Disclosure and Optimization Material Ingredients - Option 2: Material Ingredient Optimization	3rd Party Certified in Accordance with ISO14044, ISO14025 & EN15804
EQ Credit: Low Emitting Materials Option 1: Product Category Calculations	Certified

Air Quality

Indoor Air Comfort Gold
M1

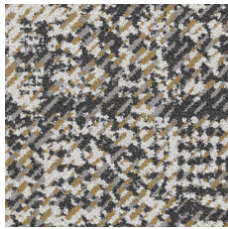
Certified
Certified

Memberships

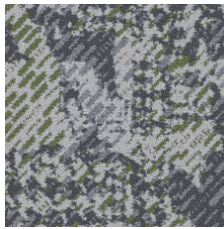
WGBC Framework
UKGBC
Emirates Green Building Council
Chemsec

WGBC Framework
UKGBC
Emirates Green Building Council
Chemsec

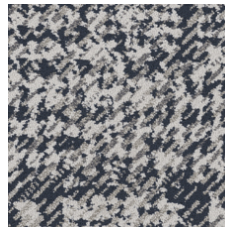
Light Reflectance Value



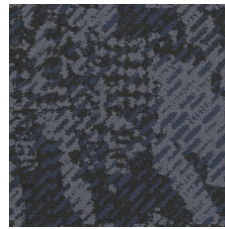
Saffron 79210
LRV 27.0



Bamboo 79375
LRV 12.0



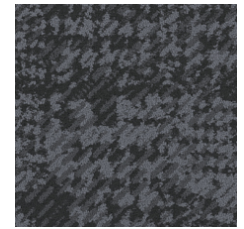
Denim 79485
LRV 16.5



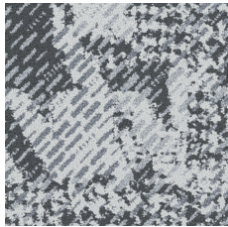
Indigo 79496
LRV 3.6



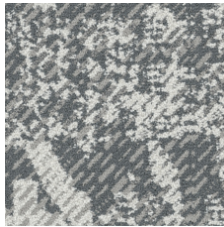
Merino 79500
LRV 18.8



Patent 79505
LRV 3.4



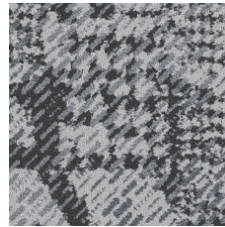
Cotton 79515
LRV 22.1



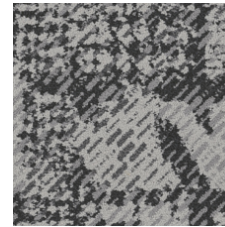
Muslin 79516
LRV 26.5



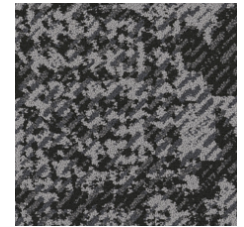
Mohair 79530
LRV 9.6



Wool 79535
LRV 15.9



Flax 79557
LRV 16.4



Angora 79596
LRV 6.6

Additional Information

**Manufactured in ISO 9001 certified facility. Meets or exceeds all local and national regulations in country of manufacture.

[Installation Guidelines](#)

[Maintenance Guidelines](#)

[15 Year Commercial Limited warranty](#)

Specifications are subject to nominal manufacturing variance. Material supply and/or manufacturing processes may necessitate changes without notice.

This product is an exclusive design and may not be duplicated in any manner. Use of this design in the creation of another product design is also strictly prohibited.

Visit shawcontract.com/testing for more information.



Corporate Headquarters +1 800 257 7429 | +1 706 532 7984 | Atlanta +1 404 853 7429 | Bengaluru +91 80 6773 0202 | Beijing +86 10 6568 588 | Chicago +1 312 467 1331 | Dubai +971 4 584 6956 | Hong Kong +852 2623 0371 | Latin America (Miami) +1 305 827 5912 | London +44 207 961 4120 | Los Angeles +1 800 233 1614 | Melbourne +61 3 9939 8543 | Mexico City +55 5010 7600 | Mumbai +91 22 6284 5050 | Nantong +86 400 800 7429 | New York +1 212 953 7429 | Paris +33 (0) 1 81 22 44 39 | San Francisco +1 415 955 1920 | Santiago +562 2431 5000 x550 | São Paulo +55 11 3071 1702 | Shanghai +86 21 3338 4000 | Singapore +65 6733 1811 | Sydney +1 800 556 302

© 2024 Shaw Industries Group, Inc., a Berkshire Hathaway Company
January 23, 2024

3 of 3