

## Respond Colour Taskworx® Tile

Style Number	<b>5T366</b>	
Collection	<b>Living Systems</b>	
Product Type	<b>Carpet Tile</b>	
Construction	<b>Standard</b>	<b>Data + Performance</b>
Type of Manufacture	<b>ISO 2424</b>	<b>tufted 1/10"   39.4 per 10cm</b>
Aspect	<b>ISO 2424</b>	<b>Multi-Level Pattern Loop</b>
Dye Method	<b>EN 994</b>	<b>100% Solution Dyed</b>
Dimensions	<b>EN 994</b>	<b>25 cm x 100 cm</b>
Primary Backing	<b>ISO 2424</b>	<b>Pet Non-Woven</b>
Secondary Backing	<b>ISO 2424</b>	<b>Taskworx® Tile   Polymer Modified Bitumen</b>
Pile Fibre Composition	<b>ISO 2424</b>	<b>Eco Solution Q100™ Polyamide 6   Contains 100% Recycled Content</b>
Total Thickness	<b>ISO 1765</b>	<b>7.6 mm</b>
Effective Pile Thickness	<b>ISO 1766</b>	<b>1.6 mm</b>
Total Mass	<b>ISO 8543</b>	<b>5163 g/m<sup>2</sup></b>
Nominal Total Pile Mass	<b>ISO 2424</b>	<b>814 g/m<sup>2</sup></b>
Effective Pile Mass	<b>ISO 8543</b>	<b>179 g/m<sup>2</sup></b>
Pile Density	<b>ISO 8543</b>	<b>0.110 g/cm<sup>3</sup></b>
Total Recycled Content	<b>65% (pre-consumer 65%   post-consumer 0%)</b>	

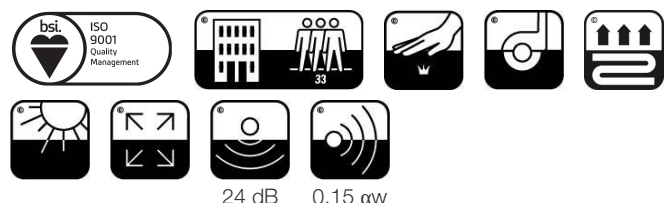


### Performance

Number of Tufts	<b>ISO 1763</b>	<b>124,000/m<sup>2</sup>   31.5 per 10cm</b>
Electrostatic Propensity	<b>ISO 6356</b>	<b>≤ 2.0 kv (Stroll Test)</b>
Use Classification	<b>EN 1307</b>	<b>33 Commercial Heavy</b>
Luxury Class	<b>EN 1307</b>	<b>LC1</b>
Dimensional Stability	<b>EN 986</b>	<b>≤ 0.2%</b>
Impact Sound Insulation	<b>ISO 10140</b>	<b>24 Db*</b>
Sound Absorption Classification	<b>ISO 354/11654</b>	<b>0.15 αW   Class E*</b>
Thermal Resistance m <sup>2</sup> K/W	<b>ISO 8302</b>	<b>0.086 M<sup>2</sup> K/W Tog 0.86</b>
Dry Slip Resistance	<b>ISO 13893</b>	<b>Pass</b>
Colour Fastness To Light	<b>ISO 105-B02</b>	<b>&gt;6</b>
Flammability	<b>EN 13501-1</b>	<b>Bfl-S1 (Adhered Testing)</b>
Castor Chair	<b>EN 985</b>	<b>≥2.4 Continuous Use</b>

**15 Year Commercial Limited Warranty** subject to installation in full accordance with manufacturer's instructions and a regular effective cleaning and maintenance programme.

### Recommended Installation Method



 <b>17</b> EU.DOP/0493/CPR/0621/0422/BT OOSTERHOUT SHOWROOM, VAARTWEG 10, 4905 BL NETHERLANDS (NLD) Notified Body 2895	 <b>22</b> UK.DOP/0338/CPR/1220/0422/BT SHAW EUROPE LIMITED BLACKADDIE RD, SANQUHAR DG4 6DB, UNITED KINGDOM Approved Body 0338	
 <b>E1</b> HCHO	 <b>Bfl-s1</b>	 <b>DS</b>
<b>EN14041:2004/AC:2006</b> For use as an indoor floor covering as specified by the manufacturer		

Corporate Headquarters +1 800 257 7429 | +1 706 532 7984 | Atlanta +1 404 853 7429 | Bengaluru +91 80 6773 0202 | Beijing +86 10 6568 588 | Chicago +1 312 467 1331 | Dubai +971 4 584 6956 | Hong Kong +852 2623 0371 | Latin America (Miami) +1 305 827 5912 | London +44 207 961 4120 | Los Angeles +1 800 233 1614 | Melbourne +61 3 9939 8543 | Mexico City +55 5010 7600 | Mumbai +91 22 6284 5050 | Nantong +86 400 800 7429 | New York +1 212 953 7429 | Paris +33 (0) 1 81 22 44 39 | San Francisco +1 415 955 1920 | Santiago +562 2431 5000 x550 | São Paulo +55 11 3071 1702 | Shanghai +86 21 3338 4000 | Singapore +65 6733 1811 | Sydney +1 800 556 302

## Coordinating Products

Carpet Tile: **Observe Colour Comfortworx® Tile, Endless Comfortworx® Tile, Respond Colour Comfortworx® Tile, Transform Colour Comfortworx® Tile, Source Comfortworx® Tile, Boundless Comfortworx® Tile, Observe Comfortworx® Tile, Respond Comfortworx® Tile, Transform Comfortworx® Tile, Endless Taskworx® Tile, Respond Taskworx® Tile, Observe Taskworx® Tile, Transform Taskworx® Tile, Observe Colour Taskworx® Tile, Transform Colour Taskworx® Tile, Boundless Taskworx® Tile, Source Taskworx® Tile**

## Product Transparency

Shaw Contract is dedicated to providing clients with a building chemistry that's safe and dependable. Working together, we will help you meet your goals as they pertain to material health. TaskWorx® products are Cradle to Cradle Certified® Bronze and assessed for impacts on human health and the environment. This product can be recycled. When it's time to replace, we can collect through our re-[TURN] scheme in EMEA.

## Material Health & Environmental Certifications

Certifications below apply exclusively to the carpet tile rug itself and not the LokWorx Tabs adhesive

Declaration of Performance	<b>EU.DOP/0493/CPR/0621/0422/BT</b>
Cradle to Cradle Certified®	<b>Bronze Level (Version 3.1)</b>
Environmental Product Declaration (EPD)	<b>3rd Party Certified in Accordance with ISO 14044, ISO 14025 &amp; EN15804</b>
Embodied Carbon (Cradle to Gate)	<b>4.17 kg CO<sub>2</sub>/m<sup>2</sup></b>
Life-Cycle Carbon Emissions	<b>Carbon Neutral</b>
Environmental Guarantee*	<b>Take Back Policy Offered For All Taskworx Products</b>
ISO 9001	<b>Certified</b>
Country of Origin**	<b>United Kingdom</b>
BREEAM Contribution Credit	<b>Certificate of Approval Schools/Offices/Health/Industrial Shed Retail</b>

## WELL V2 Contribution Credit

X08 Hazardous Material Reduction Part 1: Limit Hazardous Materials Optimization	<b>C2C Bronze Level (Version 3.1)</b>
X10 Volatile Compound Reduction Part 1 (A): Manage Volatile Organic Compounds (VOCs) Optimization	<b>C2C Bronze Level (Version 3.1)</b>
X11 Long Term Emissions Control Part 2: Flooring Optimization	<b>M1&gt; Emissions Class For Building Material</b>
X13 Enhanced Material Precaution Part 1: Select Optimized Materials Optimization	<b>C2C Bronze Level (Version 3.1)</b>
X14 Material Transparency Part 1: Promote Ingredient Disclosure Optimization	<b>C2C Bronze Level (Version 3.1)</b>

## Leed v4 Contribution Credits

MR Credit: Building Product Disclosure and Optimization Environmental Product Declarations - Option 1: Environmental Product Declaration (EPD)	<b>3rd Party Certified in Accordance with ISO 14044, ISO 14025 &amp; EN15804</b>
MR Credit: Building Product Disclosure and Optimization Material Ingredients - Option 1: Material Ingredient Reporting	<b>C2C Bronze Level (Version 3.1)</b>
MR Credit: Building Product Disclosure and Optimization Material Ingredients - Option 2: Material Ingredient Optimization	<b>3rd Party Certified in Accordance with ISO 14044, ISO 14025 &amp; EN15804</b>
EQ Credit: Low Emitting Materials Option 1: Product Category Calculations	<b>Certified</b>

## Air Quality

Indoor Air Comfort Gold  
M1

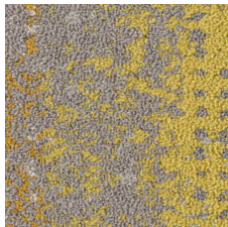
**Certified**  
**Certified**

## Memberships

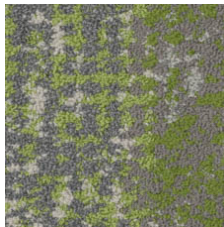
WGBC Framework  
UKGBC  
Emirates Green Building Council  
Chemsec

**WGBC Framework**  
**UKGBC**  
**Emirates Green Building Council**  
**Chemsec**

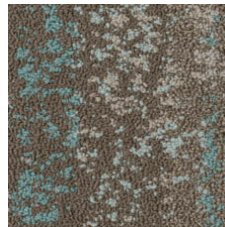
## Light Reflectance Value



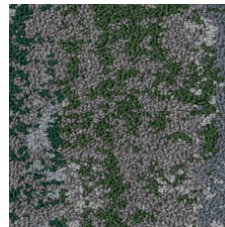
Optimistic Ochre 05225  
LRV 17.8



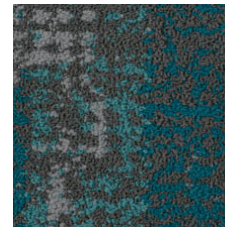
Radiant Nature 05326  
LRV 14.5



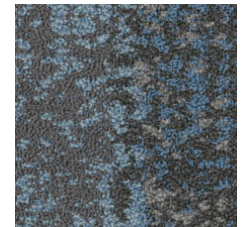
Mountain Lake 05327  
LRV 15.3



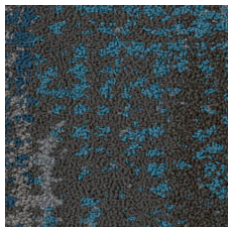
Untamed Forests 05334  
LRV 8.0



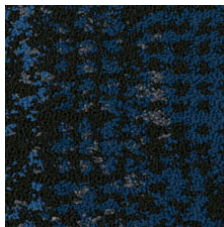
Calm Oceans 05405  
LRV 5.6



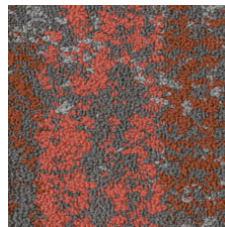
Wild Flora 05411  
LRV 8.2



Lava Springs 05440  
LRV 7.0



Deepest Skies 05486  
LRV 5.3



Fragile Coral 05865  
LRV 8.4

## Additional Information

\*\*Manufactured in ISO 9001 certified facility. Meets or exceeds all local and national regulations in country of manufacture.

[Installation Guidelines](#)

[Maintenance Guidelines](#)

[15 Year Commercial Limited warranty](#)

Specifications are subject to nominal manufacturing variance. Material supply and/or manufacturing processes may necessitate changes without notice.

This product is an exclusive design and may not be duplicated in any manner. Use of this design in the creation of another product design is also strictly prohibited.

Visit [shawcontract.com/testing](http://shawcontract.com/testing) for more information.



Corporate Headquarters +1 800 257 7429 | +1 706 532 7984 | Atlanta +1 404 853 7429 | Bengaluru +91 80 6773 0202 | Beijing +86 10 6568 588 | Chicago +1 312 467 1331 | Dubai +971 4 584 6956 | Hong Kong +852 2623 0371 | Latin America (Miami) +1 305 827 5912 | London +44 207 961 4120 | Los Angeles +1 800 233 1614 | Melbourne +61 3 9939 8543 | Mexico City +55 5010 7600 | Mumbai +91 22 6284 5050 | Nantong +86 400 800 7429 | New York +1 212 953 7429 | Paris +33 (0) 1 81 22 44 39 | San Francisco +1 415 955 1920 | Santiago +562 2431 5000 x550 | São Paulo +55 11 3071 1702 | Shanghai +86 21 3338 4000 | Singapore +65 6733 1811 | Sydney +1 800 556 302

© 2024 Shaw Industries Group, Inc., a Berkshire Hathaway Company  
January 24, 2024

3 of 3