



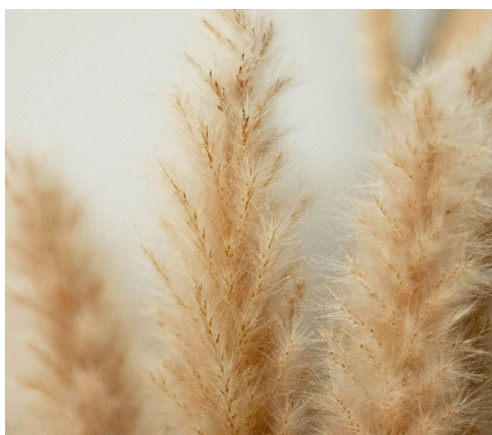
LOW EMBODIED CARBON | CARBON NEUTRAL | CLOSED LOOP RECYCLING



# Creative Connections

## Interwoven

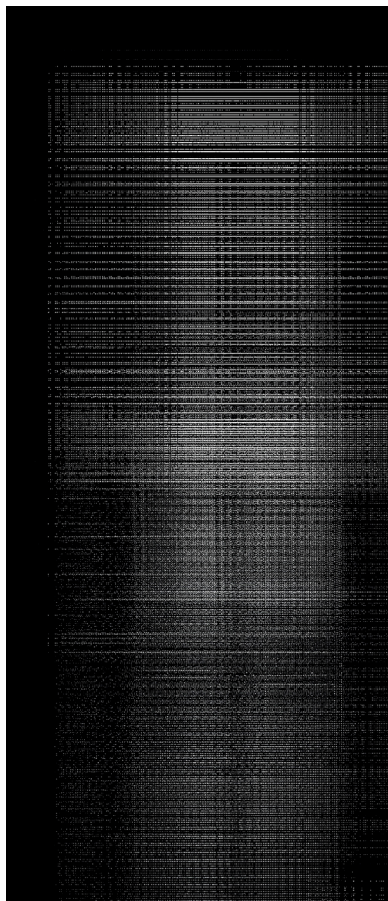
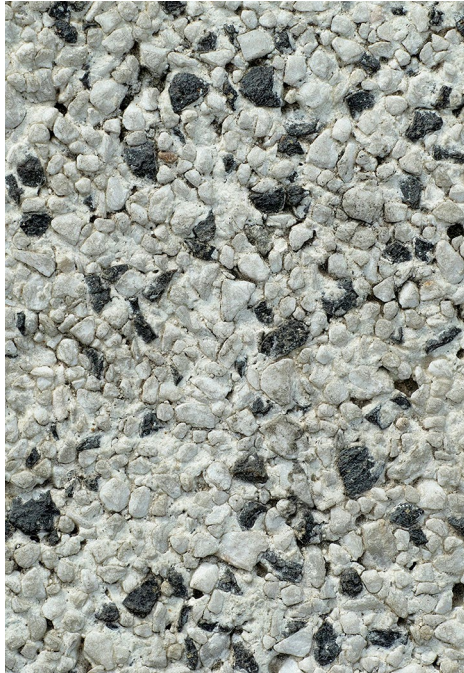
**ShawContract®**



# Creative Connections

Understated  
Interlaced

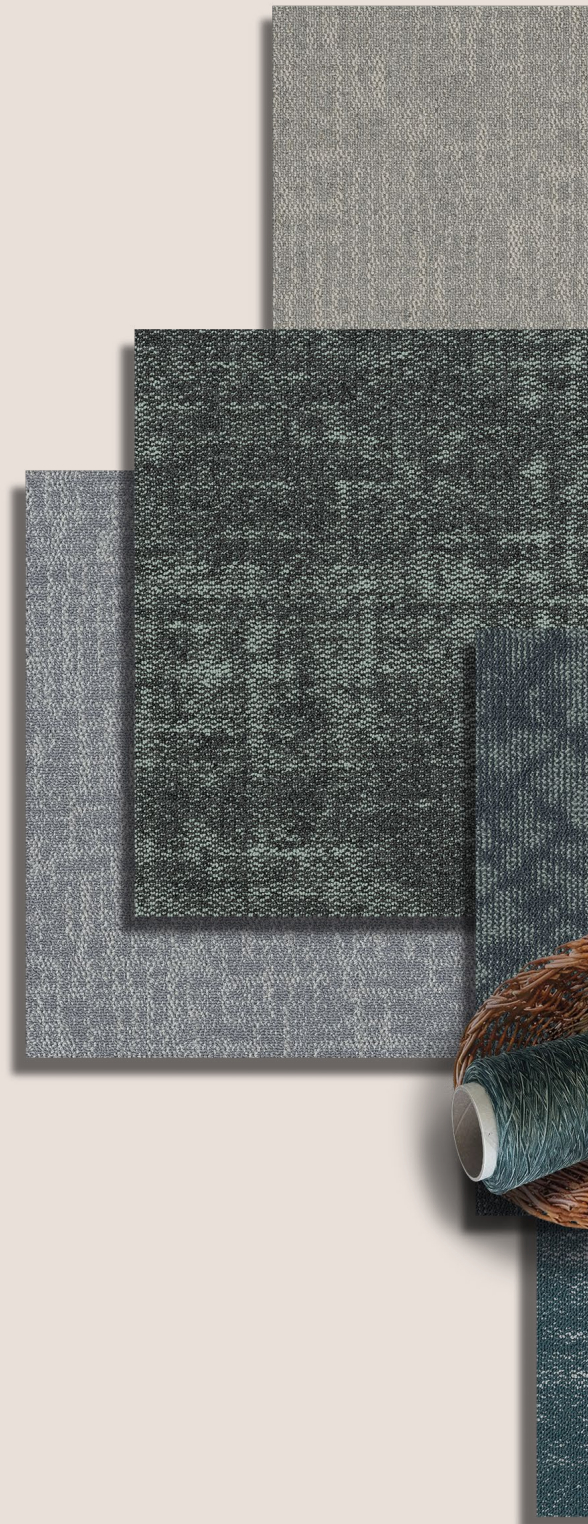
Interwoven



## creative connections

Born from the inspiration of understated luxury, this collection seamlessly integrates soft and tactile textures.

**In the realm of design, where sustainability meets creativity, Creative Connections captivates four distinct styles. A testament to our commitment to sustainable innovation. The third of four styles Interwoven is available in 16 colourways.**





This is a 4 style collection with **Interwoven** being a third style within the collection.

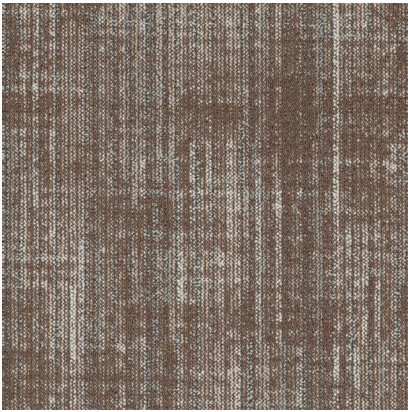
# Swatches at a glance

(50 x 50 cm)



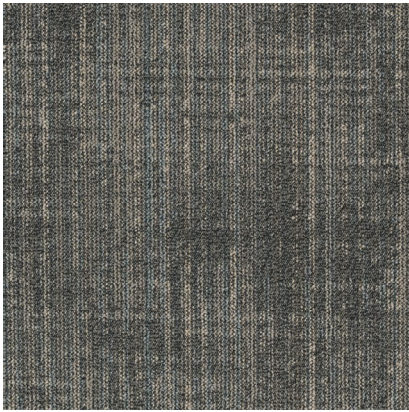
58761

Fossil



58765

Walnut



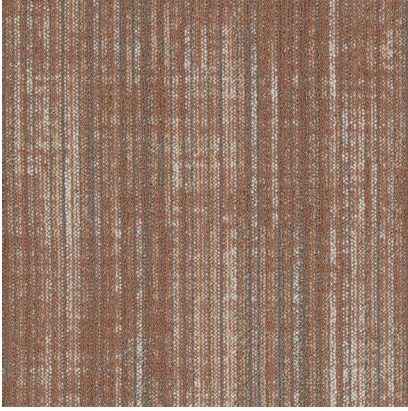
58597

Charcoal



58516

Classic



58676

Bisque



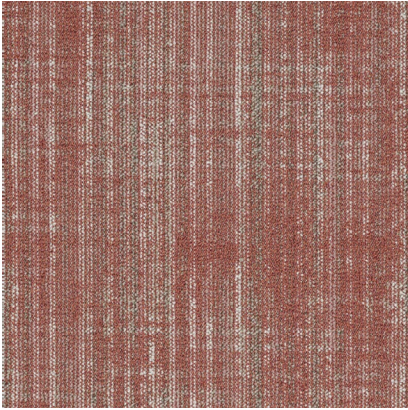
58485

Mellow



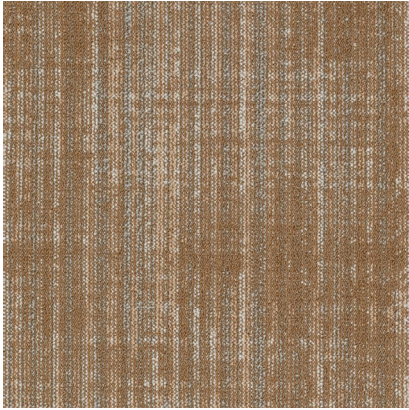
58111

Pure



58870

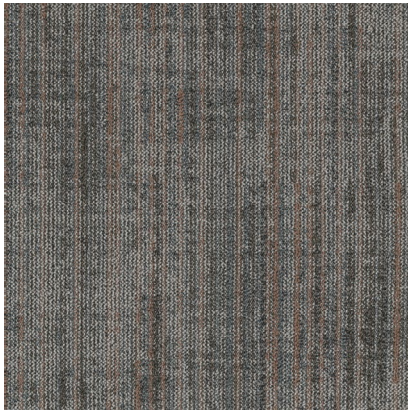
Rose



58668

Medallion

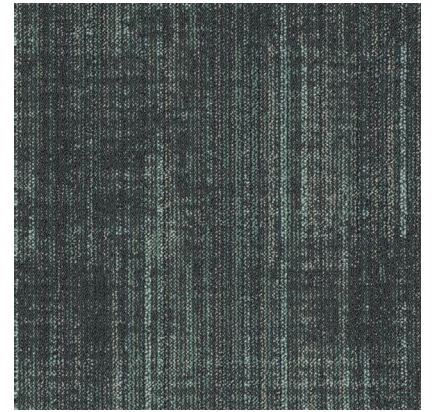
(50 x 50 cm)



58515 Hickory



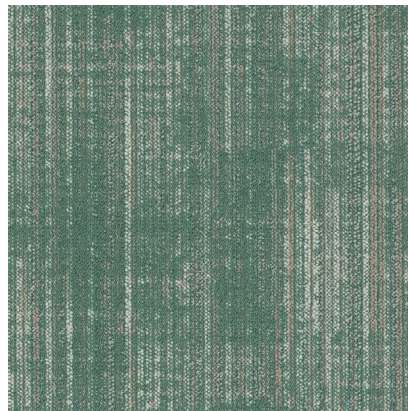
58447 Slate Blue



58448 Mineral Grey



58376 Khaki



58327 Mineral



58402 Storm Cloud



58375 Sage

## Colourways

\* Note: Visuals are representative of the colour. For precise colour and texture, please refer to sample tile.

“Where woven threads meet, stories begin.”



INTERWOVEN ● IN MELLOW

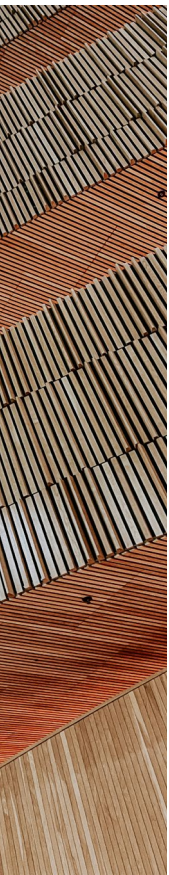
INTERWOVEN ● IN CHARCOAL

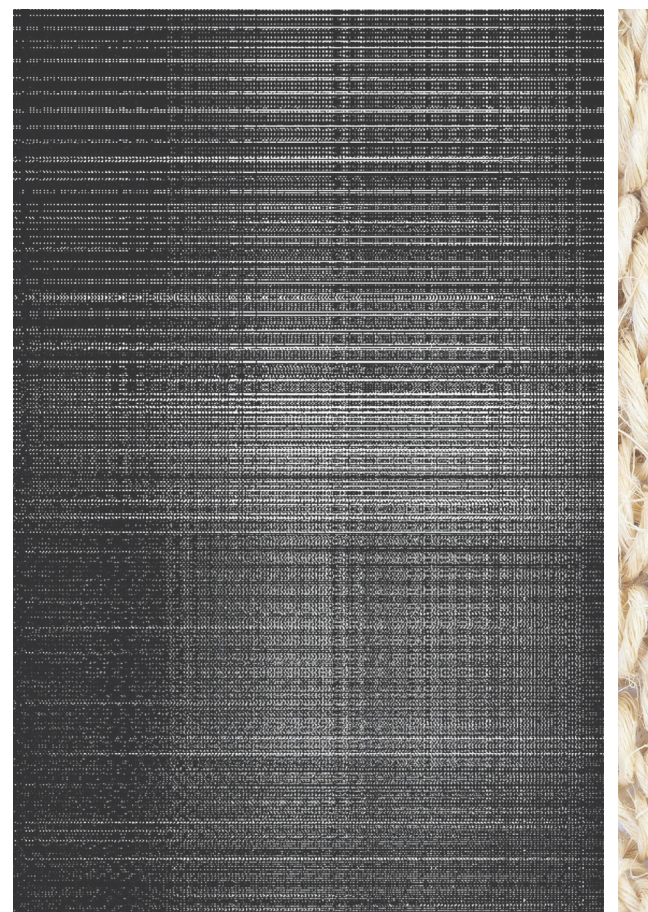


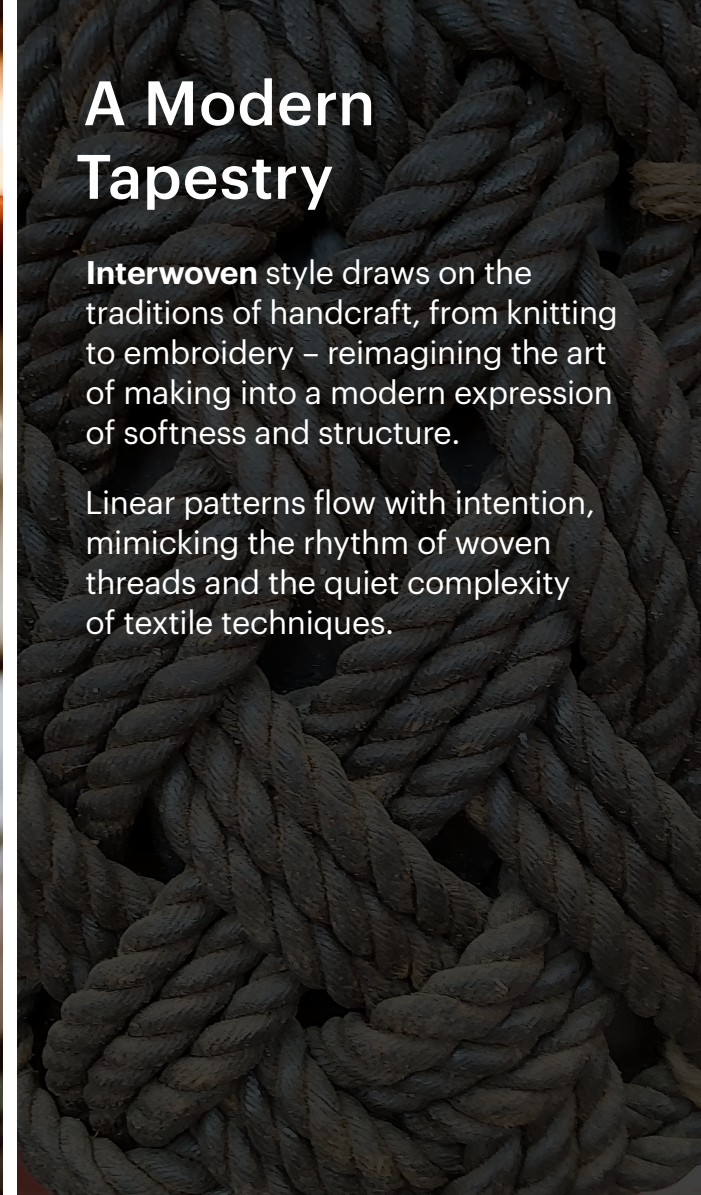
## Interwoven

A return to our roots through texture. **Interwoven** draws from the comforting familiarity, cosiness and traditional craftsmanship. Knit, weave, felt – reinterpreted through a modern, linear flow. Pattern and texture align to create a soft optical illusion, elevated by dimensional softness and hyper-tactile visual.

**Layered weave shapes a sense of depth and comfort, reconnection texture with meaning. Warmth and versatility, designed to pair with Interlaced and Understated.**



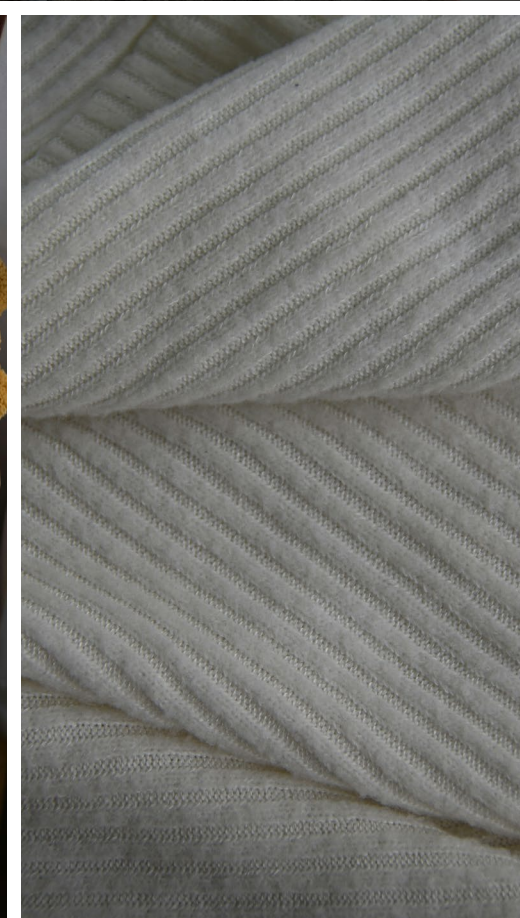




# A Modern Tapestry

**Interwoven** style draws on the traditions of handcraft, from knitting to embroidery – reimagining the art of making into a modern expression of softness and structure.

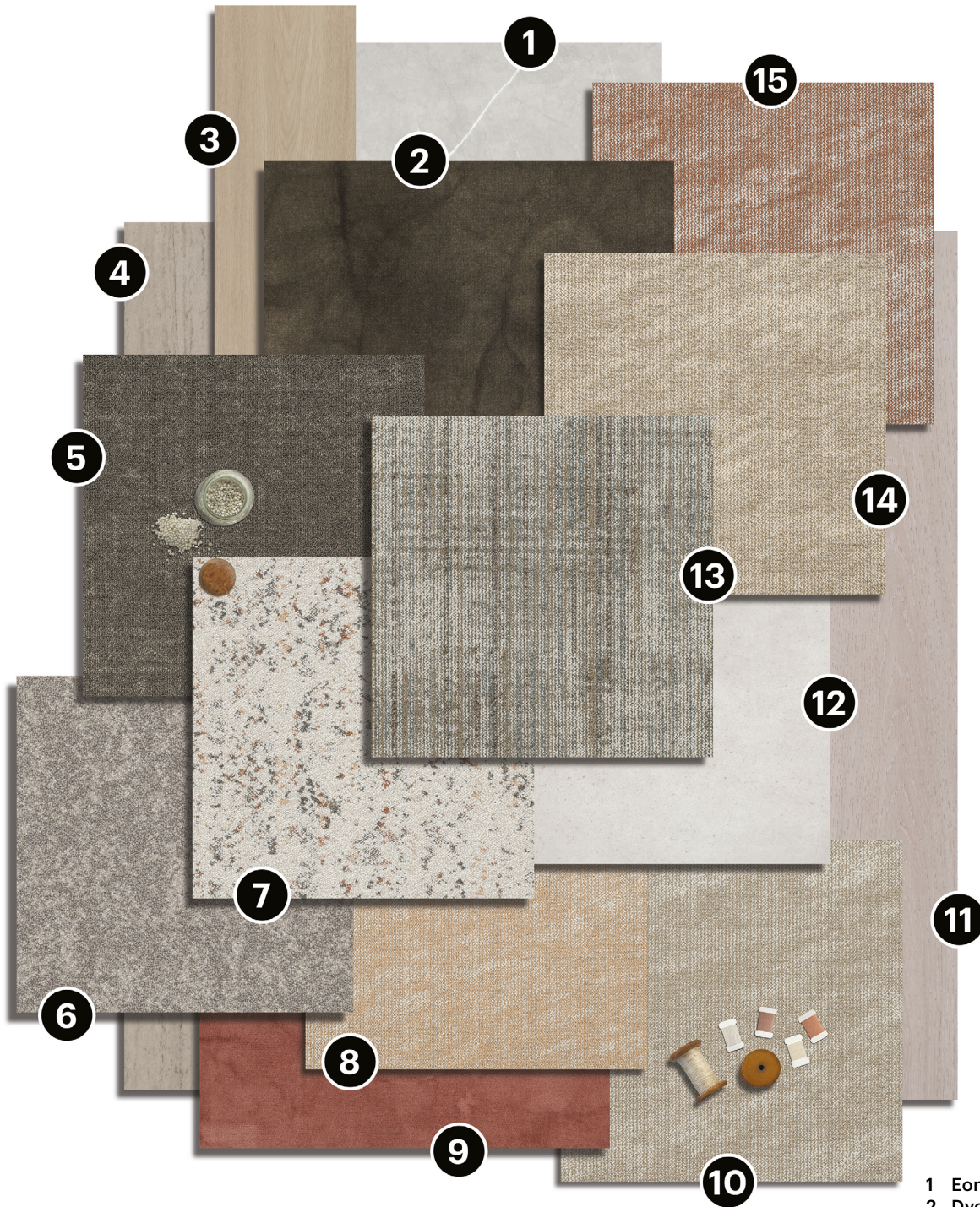
Linear patterns flow with intention, mimicking the rhythm of woven threads and the quiet complexity of textile techniques.





INTERWOVEN ● IN PURE

# Soft Ember Palette



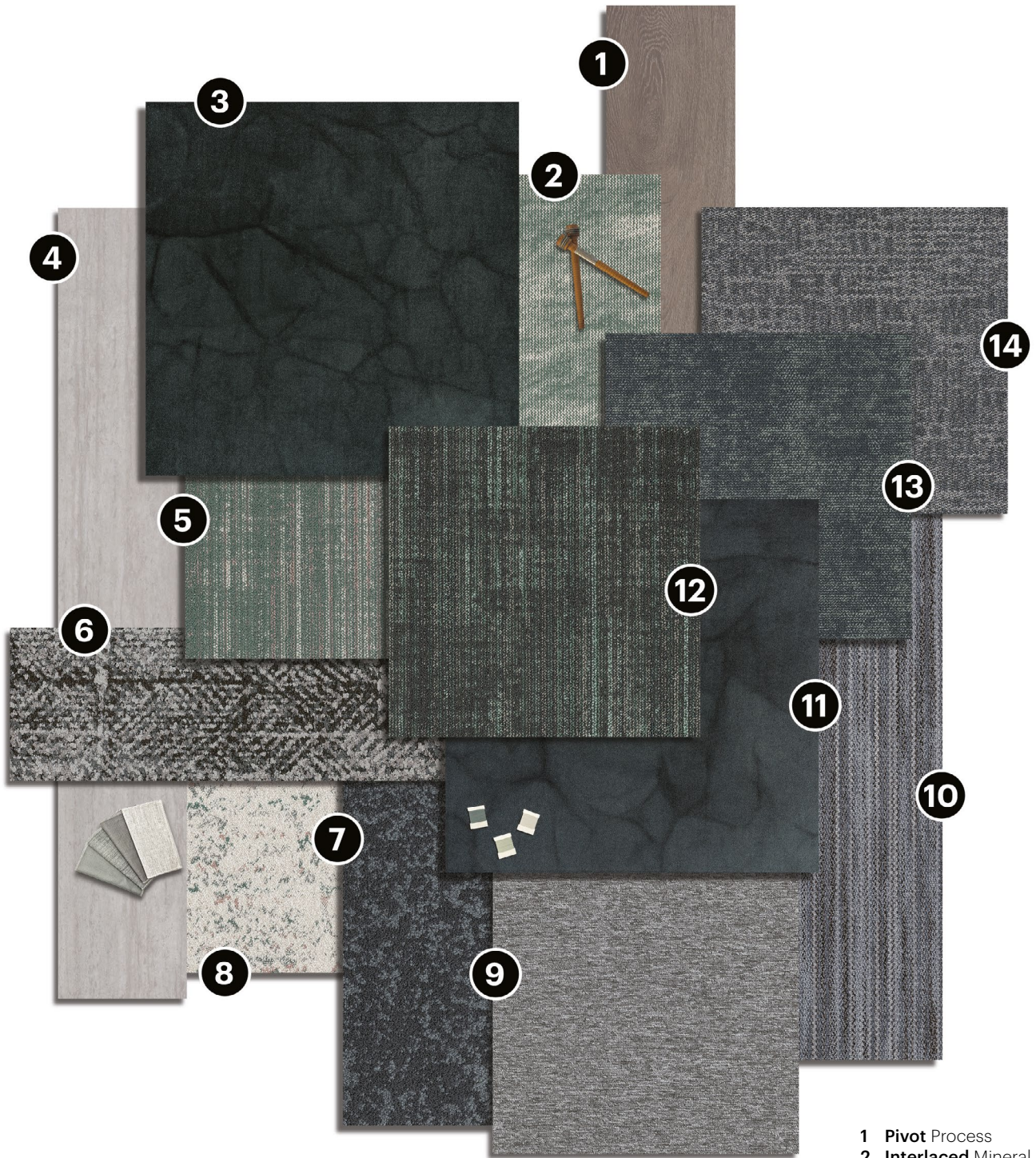
- 1 Eon Rift
- 2 Dye-Lab Sumac
- 3 Pivot Reform
- 4 Observe Regenerate
- 5 Fragment Mica
- 6 Landing Desert
- 7 Understated Pure-Bisque
- 8 Interlaced Shell
- 9 Dye Lab Sandalwood
- 10 Interlaced Oatmeal
- 11 Pivot Change
- 12 Function Silica
- 13 Interwoven Pure
- 14 Interlaced Linen
- 15 Interlaced Bisque

Updated Warm Tangerine palette introduces a calmer, earthier expression while maintaining its soft, warm and dusty foundation. A blend of understated elegance – a harmonious balance of warmth. Designed to evoke a sense of natural sophistication, it offers a versatile canvas for any interior space.



INTERWOVEN ● IN MINERAL GREY

# Mineral Calm Palette



- 1 **Pivot** Process
- 2 **Interlaced** Mineral
- 3 **Dye Lab** Iron
- 4 **Observe** Divert
- 5 **Interwoven** Mineral
- 6 **Honest** Rainstorm
- 7 **Endless** Calm
- 8 **Understated** Pure Mineral
- 9 **Complement** Ash
- 10 **Braid** Wool
- 11 **Dye Lab** Cornflower
- 12 **Interwoven** Mineral Grey
- 13 **Poised** Confident
- 14 **Pixel Square** Urban

Grounded serenity in deep, cool colourways. Anchored by mineral grey hues, this palette introduces a quiet sophistication through its blend of blue, green, and grey. A subtle shift away from warmth toward a more mineral-inspired depth creating contrast. An atmospheric palette designed to bring a sense of stillness and introspection.



INTERWOVEN ● IN CLASSIC

# Coastal Balance Palette



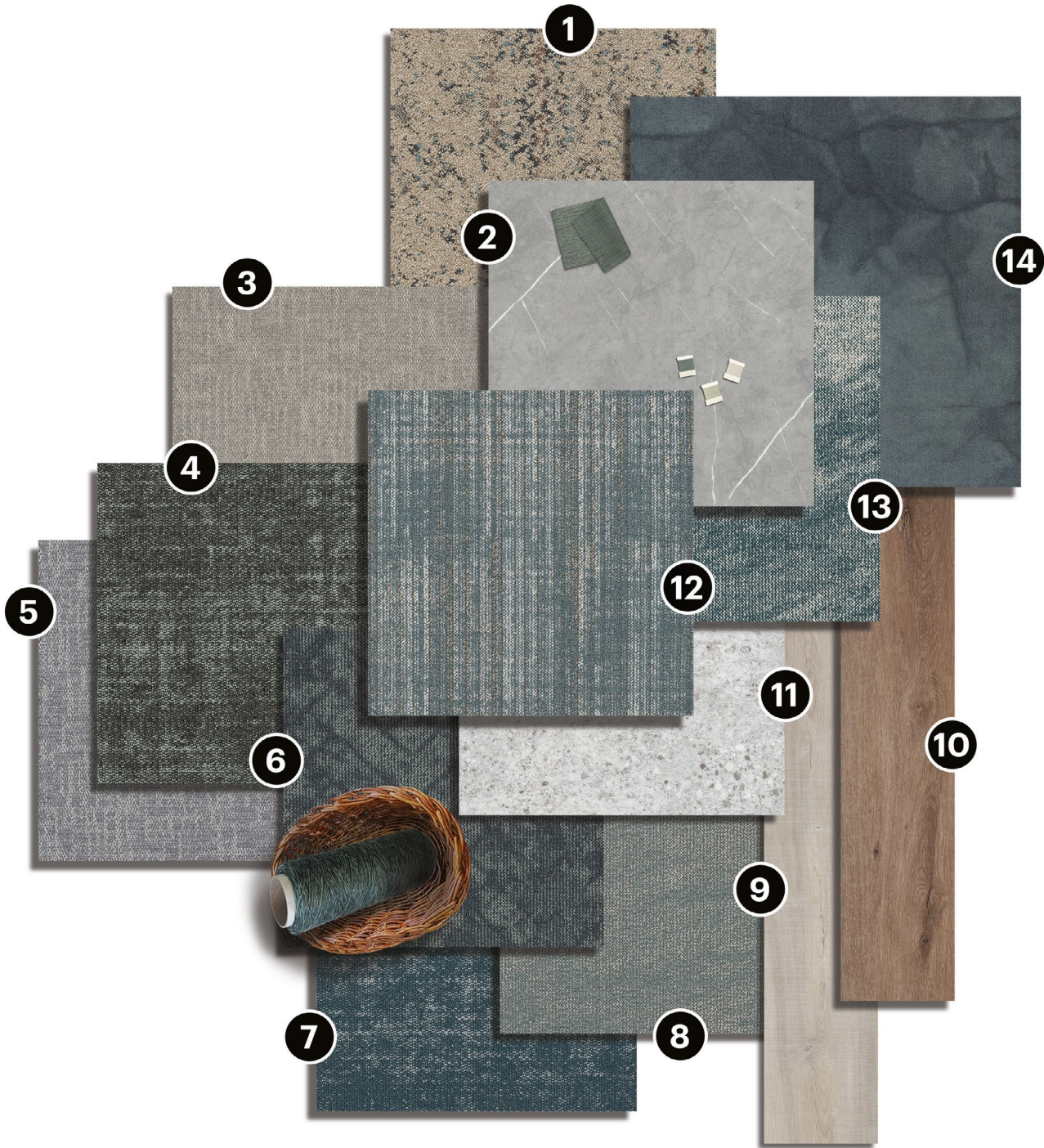
The natural harmony of warm neutrals and slate-toned blues. Inspired by the quiet beauty of the seaside and tranquil landscapes, this palette blends the grounding calm of stone and slate with gentle warmth. A soft yet characterful alternative to cooler palettes, offering a peaceful connection to nature's rhythm.

- 1 **Interlaced** Slate Blue
- 2 **Flow** Smooth
- 3 **Interlaced** Stone
- 4 **Dye Lab** Woad
- 5 **Interlaced** Medallion
- 6 **Flow** Streamline
- 7 **Pivot** Process
- 8 **Observe** Divert
- 9 **Interlaced** Silk
- 10 **Interlaced** Pearl
- 11 **Interwoven** Classic
- 12 **Interlaced** Seal
- 13 **Pivot** New Growth
- 14 **Understated** Classic-Slate Blue



INTERWOVEN ● IN STORM CLOUD

# Steel Blue Palette



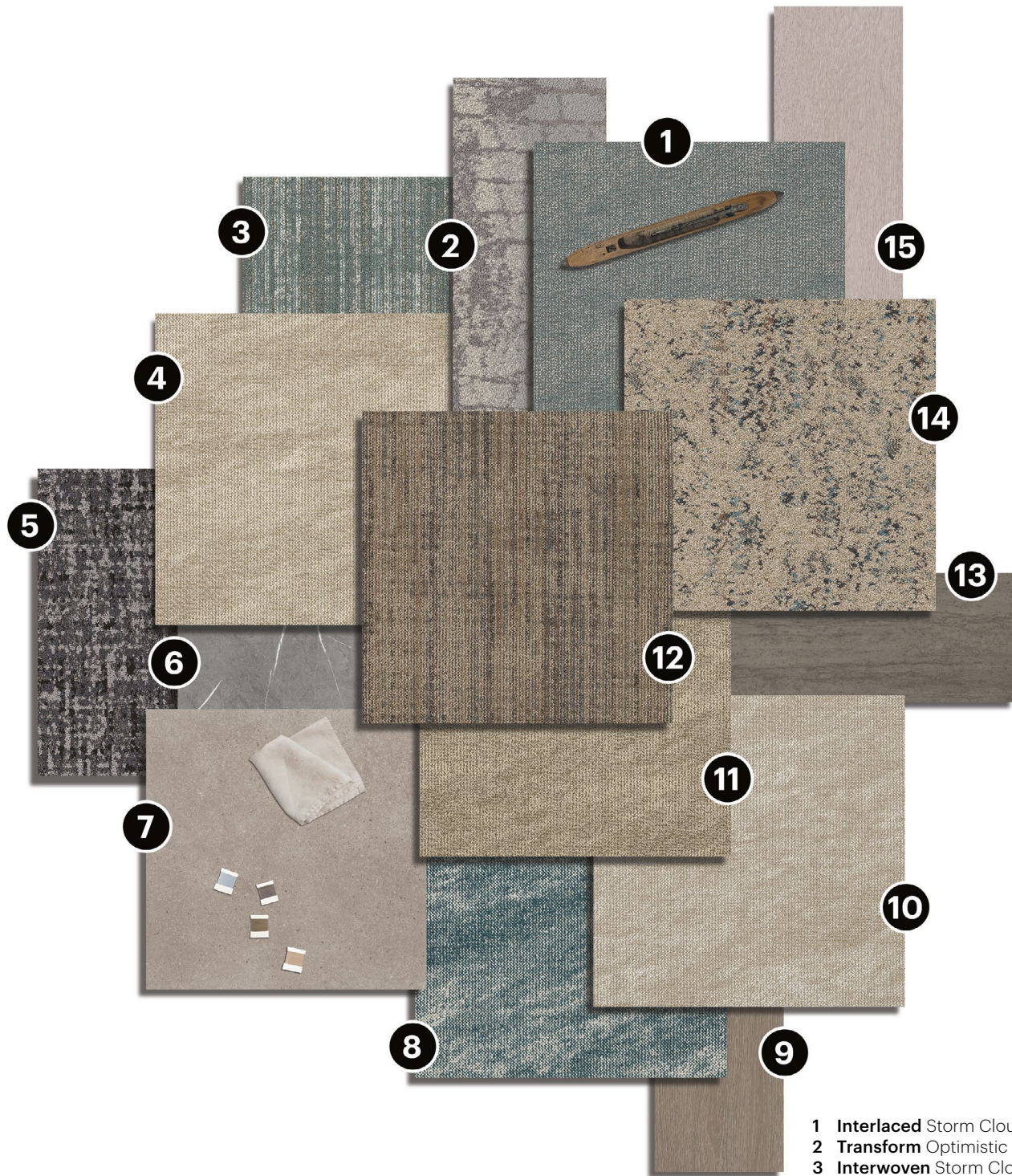
A serene fusion of deep mineral blues. Drawing from the mysterious depths of midnight hues and the fresh vitality of mineral greens, it offers a calming yet invigorating spectrum. Soft gradients blend cool blues into soothing greens, evoking a sense of peaceful balance and tranquil essence.

- 1 **Understated** Mellow-Storm Cloud
- 2 **Eon** Strata
- 3 **Graph** Gravel
- 4 **Fragment Colours** Midnight Mineral
- 5 **Pixel Square** Nickel
- 6 **Upbeat** Confident
- 7 **Fragment Colours** Steel Blue
- 8 **Interlaced** Storm Cloud
- 9 **Nordic** Fir
- 10 **Nordic** Radiant
- 11 **Amalgam** Uncover
- 12 **Interwoven** Storm Cloud
- 13 **Interlaced** Slate Blue
- 14 **Dye Lab** Black Walnut



INTERWOVEN ● IN MELLOW

# Mellow Storm Palette



- 1 **Interlaced** Storm Cloud
- 2 **Transform** Optimistic
- 3 **Interwoven** Storm Cloud
- 4 **Interlaced** Linen
- 5 **Textile** Angora
- 6 **Eon** Metamorphic
- 7 **Function** Pebble
- 8 **Interlaced** Slate Blue
- 9 **Pivot** Renew
- 10 **Interlaced** Oatmeal
- 11 **Interlaced** Oyster
- 12 **Interwoven** Mellow
- 13 **Observe** Outlook
- 14 **Understated** Mellow-Storm Cloud
- 15 **Pivot** Change

Evolution of blue-grey harmony introduces softer, pebble-toned hues and subtle pattern play, enriching the palette with a sense of elegant movement and modernity. While maintaining its core of earthy blues and greys, it embraces a more refined, on-trend aesthetic, offering a timeless yet contemporary sophistication.





INTERWOVEN ● IN KHAKI





INTERWOVEN ● IN MEDALLION

# Backing Options

## EcoWorx S<sup>®</sup>

- high performance polyolefin plastomer backing

100%

close loop recyclable backing solution

EcoSolution Q100™

100%

recycled content nylon fibre, optimised for low carbon and carbon neutral

Embodied Carbon (EPD Calculation A1-A3)

4.91 kg CO<sub>2</sub> e/m<sup>2</sup>

EcoWorx S<sup>®</sup> carpet tile weighs

50%

less than bitumen-backed carpet tile

## ComfortWorx<sup>®</sup>

- High performance acoustic and underfoot comfort carpet tile backing

90%

Matrix pad made from 90% recycled PET bottles.

EcoSolution Q100™

100%

recycled content nylon fibre, optimised for low carbon and carbon neutral

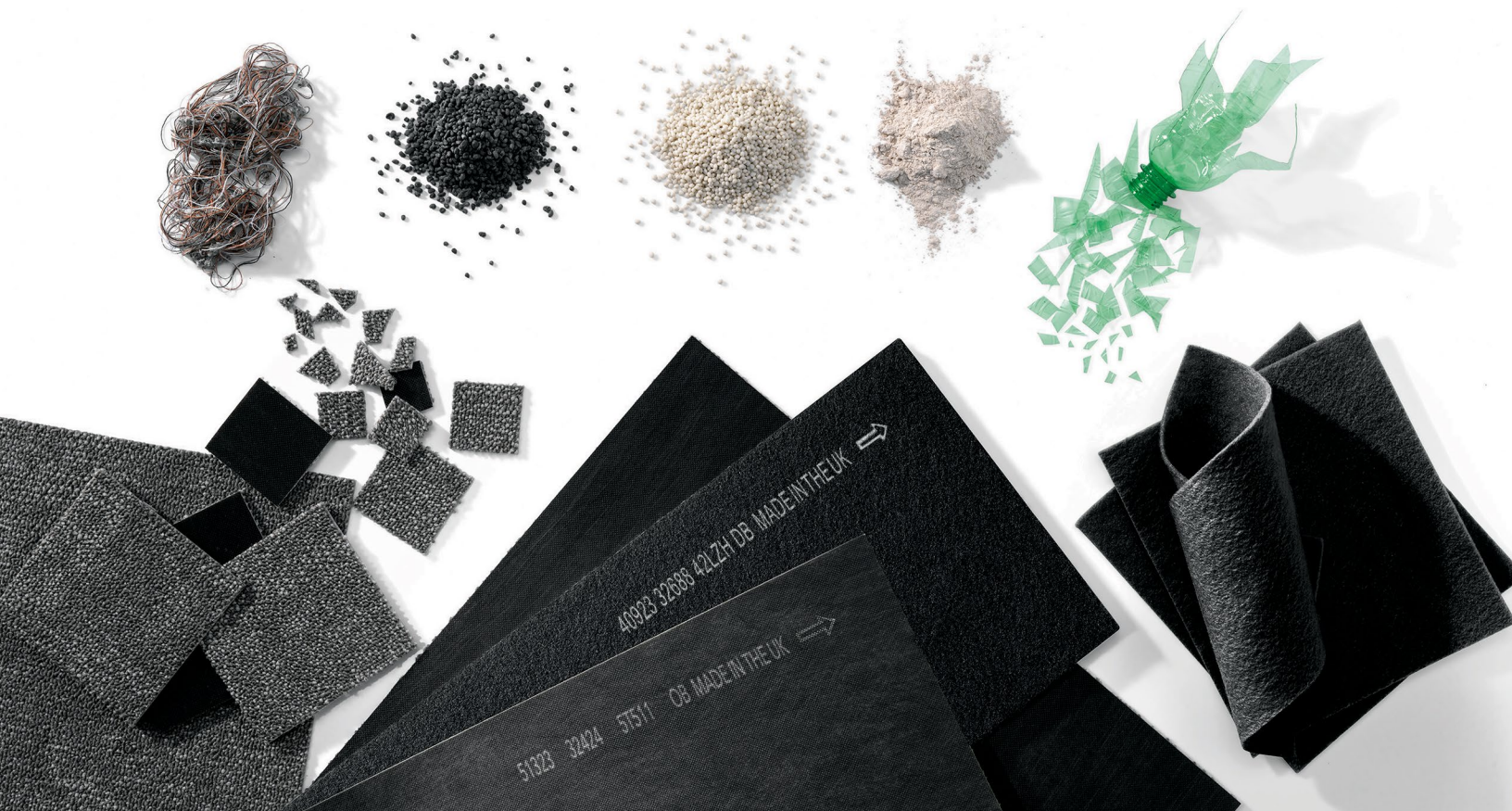
Embodied Carbon (EPD Calculation A1-A3)

5.10 kg CO<sub>2</sub> e/m<sup>2</sup>

ComfortWorx<sup>®</sup> carpet tile delivers

65%

Improvement in sound absorption performance compared to other hard backed carpet tiles or hard surfaces



# Works with WELL™ – Leading the Way in Healthy Flooring

Everyone deserves to live their best, healthiest life. WELL marks our commitment to people-first places.

Our EcoWorx® and EcoWorx S® carpet tiles were the first flooring products in the world to earn the Works with WELL™ mark – demonstrating our commitment to creating spaces that support human health and well-being.

**The Works with WELL™ mark, developed by the International WELL Building Institute (IWBI), identifies products that align with WELL strategies to advance human health and wellness in the built environment. This recognition ensures that our flooring solutions contribute to better indoor air quality, material health and overall well-being.**

Learn more at [www.wellcertified.com](http://www.wellcertified.com)



**10**  
Concepts in WELL v2

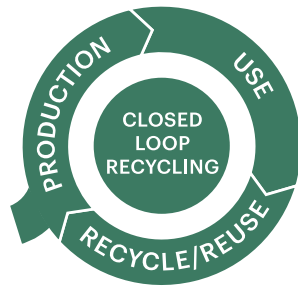
 Air	 Water	 Nourishment	 Light	 Movement
 Thermal Comfort	 Sound	 Materials	 Mind	 Community



**1.**

EcoWorx S<sup>®</sup>  
carpet tile

**Closing  
the loop**



re[TURN]<sup>®</sup>

**3.**

Re-extruded  
EcoWorx S<sup>®</sup>  
and EcoWorx<sup>™</sup>  
Resilient pellets

**2.**

Process in progress

## LRV & L\*: Light Reflectance Values

### Light Reflectance Values and L\*

LRV is a measurement that indicates how much light a surface reflects and how much it absorbs.

Understanding the Light Reflectance Values of surfaces enables interior lighting levels to be optimised and colours to be contrasted.

Designers can use the L\* value for determining lighting levels or the LRV (Y) value to compare the carpet tile colours to edgings and other surface finishes.

Other style LRVs can be found on the Shaw Contract website.

	Colour name	Colour number	LRV	L*
<b>Interwoven</b> Colours available	pure	58111	29.2	60.97
	mineral	58327	16.0	46.97
	sage	58375	19.1	50.84
	khaki	58376	8.4	34.80
	storm cloud	58402	21.6	53.58
	slate blue	58447	9.9	37.67
	mineral grey	58448	8.4	34.79
	mellow	58485	13.1	42.97
	hickory	58515	10.1	38.11
	classic	58516	15.2	45.94
	charcoal	58597	10.1	37.94
	medallion	58668	19.1	50.82
	bisque	58676	17.3	48.61
	fossil	58761	11.1	39.80
	walnut	58765	15.8	46.66
	rose	58870	17.9	49.34

# Specifications

Access fully-detailed product specification information in seconds by scanning the QR code of individual style.

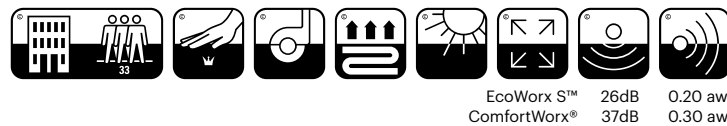
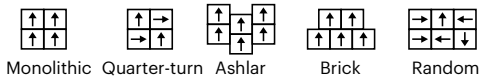
	EcoWorx S®	ComfortWorx®
Style number:	5T658	C048W
Style name:	Interwoven	Interwoven
Collection:	Creative Connections	Creative Connections
Product type:	Carpet tile	Carpet tile

Construction	Data + Performance	
Type of manufacture	Tufted 1/10"   39.4 per 10cm	Tufted 1/10"   39.4 per 10cm
Aspect	Multi-level pattern loop	Multi-level pattern loop
Dye method	100% solution dyed	100% solution dyed
Dimensions	50 x 50 cm   20 tiles (5 m²) per box	50 x 50 cm   16 tiles (4 m²) per box
Primary backing	PET non-woven	PET non-woven
Secondary backing	EcoWorx S® Tile   Polyolefin Plastomer	ComfortWorx® Tile   Matrix Pad layer Contains 90% recycled content
Pile fibre composition	EcoSolution Q100™   Polyamide 6 Contains 100% recycled content	EcoSolution Q100™   Polyamide 6 Contains 100% recycled content
Total thickness	5.6 mm	10.0 mm
Effective pile thickness	2.3 mm	2.1 mm
Total mass	2470 g/m²	3888 g/m²
Nominal total pile mass	616 g/m²	616 g/m²
Effective pile mass	267 g/m²	246 g/m²
Pile density	0.116 g/cm³	0.118 g/cm³
Embodied Carbon (EPD Calculation A1-A3)	4.14 kg CO <sub>2</sub> e/m²	4.58 kg CO <sub>2</sub> e/m²
Recommended installation method	Monolithic, Quarter-turn, Ashlar, Brick, Random	Monolithic, Quarter-turn, Ashlar, Brick, Random



For detailed warranty information and the most accurate information on the recycle content please visit [shawcontract.com](http://shawcontract.com)

## Recommended installation methods



London +44 (0) 20 7961 4120 | Dubai +971 4 584 6956 | Oosterhout +31 20 2620955

Specifications are subject to nominal manufacturing variances. Material supply and/or manufacturing processes may necessitate specification changes without notice. Visit [shawcontract.com](http://shawcontract.com) for more information. For detailed warranty information and the most accurate information on the recycle content please visit [shawcontract.com](http://shawcontract.com)

<p>22</p> <p>EU.DOP/2895/CPR/1222/0323/EST</p> <p>OOSTERHOUT SHOWROOM VAARTWEG 10, 4905 BL NETHERLANDS (NLD)</p> <p>Notified Body 2895</p>	<p>22</p> <p>UK.DOP/0338/CPR/1222/0323/EST</p> <p>SHAW EUROPE LIMITED, BLACKADDIE ROAD SANQUHAR DG4 6DB, UNITED KINGDOM</p> <p>Approved Body 0338</p>
<p>EN14041:2004/AC:2006</p> <p>For use as an indoor floor covering as specified by the manufacturer</p>	



People Together, Planet Forever is our **promise**.  
Neutral is not enough is our **call to action**.

We are one planet. We cannot afford to be neutral. We must make changes and take action together. *Together, we are Design Optimists.*

## MATERIAL HEALTH

*Together*, we design and manufacture products to optimise human environments.



### Cradle to Cradle Certified®

Our products are verified as being safe, circular and responsibly made. Over 90% of products are Cradle to Cradle Certified®.



### Indoor Air Quality

People spend 90% of their time indoors, making these environments critical to our wellbeing. These products are GREENGUARD Certified, meeting the California Department of Public Health (CDPH) indoor air quality standards for low-emitting products.



### Product Transparency

Creative Connections collections have a Health Product Disclosure (HPD), which is a transparent disclosure of product content and associated health information.

## CARBON IMPACT

*Together*, we are a positive force in the global effort to collectively fight climate change.



### Carbon Neutral Manufacturing

Our manufacturing facility in Scotland runs entirely on electricity from renewable sources.



### Low Embodied Carbon

EcoSolution Q100™ is a high-performance nylon fibre made from 100% recycled content. Flooring products like EcoWorx® and EcoWorx S®, made with EcoSolution Q100™ fibre, reduce carbon impact by 42% compared to traditional carpet tiles.

## CIRCULAR ECONOMY

*Together*, we practice a closed-loop approach to sustainability.

### re[TURN]™ We Want it Back

At the end of its useful life, we will reclaim and recycle EcoWorx®, EcoWorx S® and EcoWorx™ Resilient styles to make more EcoWorx products. Since 2006, we have reclaimed and recycled nearly 500 million kilograms of post-consumer flooring, reducing landfill waste.

## DIVERSITY, EQUITY & INCLUSION

*Together*, we nurture an environment where every voice and perspective can be heard, with equal value placed on seen and unseen experiences.



### Supplier Diversity Programme

Community | Supply chain | People

- Signatory of UN Global Compact upholding and protecting human rights, labour, environment and anti-corruption standards.
- World GBC Health & Wellbeing Framework supporter



# ShawContract®

London +44 (0) 20 7961 4120 | Dubai +971 4 584 6956 | Oosterhout +31 20 2620955  
UK: [infouk@shawcontract.com](mailto:infouk@shawcontract.com) | Middle East/Africa: [infomea@shawcontract.com](mailto:infomea@shawcontract.com) | Netherlands: [infonl@shawcontract.com](mailto:infonl@shawcontract.com)

Corporate Headquarters +1 800 257 7429 | +1 706 532 7984 | Atlanta +1 404 853 7429 | Bangalore +080 6773 0202 | Beijing +86 10 6568 5881  
Chicago +1 312 467 1331 | Hong Kong +852 2623 0371 | Latin America (Miami) +1 305 827 5912 | Los Angeles +1 800 233 1614 | Melbourne +61 3 9939 8543  
Mexico City +55 5010 7600 | Nantong +86 400 800 7429 | New York +1 212 953 7429 | San Francisco +1 415 955 1920 | Santiago +562 2431 5000 x 550  
São Paulo +55 11 3071 1702 | Shanghai +86 21 3338 4000 | Singapore +65 6733 1811 | Sydney +61 2 8065 1901